



2023

YEAR OF

CRAWLER



CRAWLER Caravans is leading and pioneer offroad caravan manufacturer. Since the day it was founded, it continues investments in the fields of human, engineering, product development, production and service network at full speed with the aim of continuous development.

Its European headquarter is located in Göppingen, Germany, as well as its head office and factory in Turkey. It produces trailer caravans, motorhomes, camping modules, search and rescue modules, special usage trailers and superstructures that can be used in all terrain, road and weather conditions. All CRAWLER branded products have the design and durability to withstand harsh conditions in order to ensure continuity of use.

With the proud of being the leader and pioneer company producing offroad caravans, CRAWLER continues its R&D and production activities to produce more environmentally friendly, more compact, safer and more capable vehicles by always aiming for the better. More than 100 employees, CRAWLER aims to offer its customers high quality products and an unforgettable experience.

CRAWLER expands its Dealer Network in different countries and delivers its products and services to its customers through more than 20 dealers in 16 countries with the aim of customer satisfaction and its dealer network continues to expand.

The main material of CRAWLER products are aluminum.

Rust-resistant, flexible and lightweight structure of aluminum makes CRAWLER products superior to other caravan models in terms of both performance and durability. Thanks to the ground clearance, tire sizes, center of gravity, approach and departure angles of CRAWLER models, it provides a smooth and comfortable trips in all road conditions.

In order not to compromise on quality and continuity, accessories and components from brands that have proven their quality and comply with world standards are used in our products.





OTAG620



OTAG620



standard features

Exterior Design

Windows with Fly Screen and Curtain
Sliding LED Stops *
Side Track Lights *
Side Horn Lamps *
Rear Rectangle Reflector
Yellow Reflector
Tag Lights
LED Outdoor Lighting
External Storage Cabinets
Exterior Wardrobe Lightings
Side Opening Navigation Cover

Interior Design

Compact Laminate Interior Walls
Storages with Electrostatic Powder Coating
Painted
Compact Laminate Flooring
Ceramic Based Heat Insulation Coated Ceiling
Compact Laminate Ceiling
Extra Sound and Heat Insulation in the Wall
and Inside the Wall
Inner Storage Cabinets
Cabinet Doors Fixing Pistons

Living and Sleeping Area

Seating Area for 6 People
Seat and Back Cushions
Underarm Wardrobes
Decorative Automatic and Movable Wooden
Table
24" Smart TV
Lockable Side Opening Navigation Cover
Bunk Bed (180x79 cm)

Bedroom

Main Bed (195x155 cm)
Drawers
Storage Cabinets
Mosquito Net and Curtain Window
Mosquito Net and Curtain Sun Roof

Kitchen Area

Fixed Square Chrome Kitchen Sink
Expandable Chrome Kitchen Countertops
Thetford 3 Burner Stove and Triplex Oven*
Kitchen Pop-up
Chrome Kitchen Countertops
Kitchen Ware Drawers
Under Counter Kitchen Cabinets
Over Counter Kitchen Cabinets
Hot and Cold Adjustable Faucet
Thetford 152L Refrigerator *

Bathroom / Toilet

Mist Glass Bathroom Door
Laminate Flooring
Thetford Cassette Toilet System*
Folding Sink
Hot & Cold Adjustable Chrome Battery
Concealed Bathroom Compartment

Electric / Electronic / Control System

Crawler Smart Panel
Lighting Dimmers
Truma Combi Control Panel
Truma Duo Lever
Push-pull Locked Control Cabinet
Schmid Solar Panel 380w *
Inverter 2000w *
Victron Energy 220 Ah AGM Battery (2 Pcs.) *
Victron Blue Smart Charger (20 A) *
220v Charger Port
Charging Cable
Vehicle Electric Charging System (Cyrx)
USB Charging Ports
12v Power Outlet
LED Lightings

Water System

Water Pump (19 L/mn.)
Locked Water Filling Nozzle
Chrome White Water Tank (496 L)
Chrome Grey Tank (290 L)
Black Water Tank (17 L)
Water Drain Valves

Heating / Cooling / Gas / Fuel System

Truma Combi Diesel 6 (Air and Water Heater
System) *
Hot Air Outlet from 6 Points
Truma Duo Control Panel*
Truma Gas Antifreeze *
Truma 4 Gas Valves *
Truma Collision Sensor
Gas Filter *
Gas Regulator
Copper Gas Installation
Ventilated Roof Hex Glass (2 pcs)

optional features

Double Locked, Covered Special Transition Bellow
Large Rear Storage Space
Boat / Canoe / Carrying Lift
Smart Back Lift for ATV, UTV and relatives
Roll Bar
Roof Terrace Area and Automatic Opening Railing
Thule Tent (3 Meters) (or Equivalent)
Victron Energy 220 Ah Battery (Extra)
Schmid Solar Panel 325w & Regulator
Neta Portable Satellite
Front Hydraulic Land Crane (15 Tons)
Turma AC System*
LG Washing Machine*
Electrolux Dishwasher
Truma AC Controller
Gun Holder
Fishing Holder
Water Antifreeze System
Truma Aventa Compact Plus Ceiling AC
Bunk Bed
Layout and Interior Design
Worktable
Solara Solar Panel 160w & Solara Regulator

* Brands and models may differ depending on the supply status.

**Crawler reserves the right to make changes to product and option features as part of product development efforts.

photos



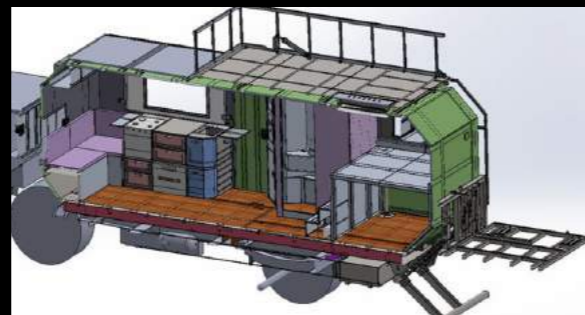
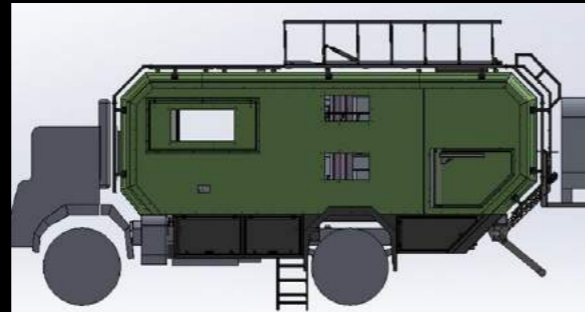
upholstery



Ash Grey / Deep Grey Silver Grey Deep Black (Line-X)

technical specifications

Cabinet Length: 650 cm
Cabinet Width: 250 cm
Cabinet Height: 210
Cabinet Weight: 3500 kg
Body: Aluminium



*OTAG can be applied to different brand truck models.

exterior color





OTAG385



OTAG385



standard features

Exterior Design

- Windows with Flyscreen and Curtain
- Toilet/Bathroom External Door
- Was Rear LED Lights with Sequential Indicators *
- Was Side Marker Lamps *
- Rear Rectangle Re lector
- Yellow Re lector
- Outside Lighting Leds
- Outside Storage Cabinets
- Outside Storage Cabinets Lighting
- Chrome Cylinder Locks
- Chrome Cabinet Hinges
- Chrome Cabinet Door Stoppers
- Side and Back Pop-up Cover
- Expandable Pop-up Roof System with Windows

Interior Design

- Electrostatic Powder Coating (Cabinet and Interior Walls)
- Compact Laminate Flooring
- Ceramic Based Insulation Coating
- Inside Storage Cabinets
- Cabinet Locked Handles
- Cabinet Doors Fixing Pistons
- Fabric Hanging Pockets
- USB Outlets
- 12v Power Outlet
- Lighting LEDS

Sitting and Sleeping Area

- 4 Person Seating Area
- Seat and Back Cushions
- Under Seat Storage Cabinets
- Height Adjustable Aluminum Table
- 24 Inch Smart TV
- Side Opening Travel Cover Locks
- Secondary Bed Area (195 x 115 cm)

Bedroom

- Primary Bed Area
- Wardrobe
- Storage Drawers
- Storage Cabinets

Kitchen Area

- Chrome Kitchen Countertop
- Kitchen Drawers
- Kitchen Cabinets (Under Countertop)
- Kitchen Cabinets (Countertop)
- Thetford 3 Burner Stoves and Triplex Oven *
- Fixed Chrome Kitchen Sink
- Hot/Cold Water Faucets
- 152 Lt Thetford Refrigerator (Or Similar) *

Bathroom / Toilet

- Foldable Bathroom Door
- Laminate Flooring
- Thetford Cassette Toilet (Or Similar) *
- Foldable Shower Sink
- Chrome Shower Head with Hot / Cold Water Faucet
- Shower Head with Hot / Cold Water Faucet

Electric / Control System

- Crawler Smart Panel and Control Box
- Schmid Solar Panel 380w *
- Invertor 600 w *
- Victron Energy 220A AGM Battery (2 Pcs.) *
- Victron Blue Smart Charger (20 Amper) *
- Defa 220v Charger Input *
- Cable and Bag
- Lighting Dimmers
- Car Electrical Charging System (Cyrx)

Water System

- Water Pump (19 Lt/Min)
- Water Filler Jack
- Chrome Fresh Water Tank (496 Lt)
- Chrome Grey Water Tank (126 Lt)
- Black Water Tank (17 Lt)
- Water Drain Valve

Heating / Cooling / Gas / Fuel System

- Truma Combi 6 (Air and Water Heater System) *
- Heater Outlet from 6 Points
- Truma Duo Switch *
- Truma LPG Anti-Freeze System *
- Truma Double Gas Valve *
- Truma Crash Sensor *
- Gas Filter
- Gas Detector
- Copper Gas System 8mm
- Ceiling Hek Glass with In/Out Ventilation

optional features

- Layout And Interior Design
- Schmid Solar Panel 325W & Charge Regulator *
- Solara Solar Panel 160w & Solara Regulator *
- Rear Atv / Utv Carrier & Lift
- Thule Tent 3 Meters *
- Fishing Holder
- Gun Holder
- Victron Energy 220 Ah Battery (Extra) *
- Neta Portatif Uydu *
- Truma Aventa Compact Plus Ceiling Type Air Conditioner *
- Water Anti Freeze System
- Front Land Crane 24v (18000lb)

* Brands and models may differ depending on the supply status.

**Crawler reserves the right to make changes to product and option features as part of product development efforts.

photos



technical features

Body: Aluminium
Cabinet Length: Chassis: 3.250 mm Cabin: 3.850 mm
Cabinet Width: 2.350 mm
Cabinet Height: 1.900 mm

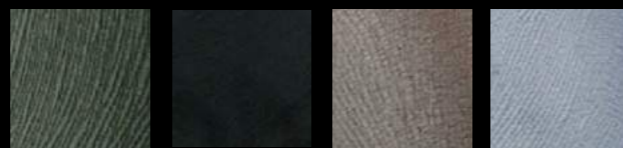


exterior colors



Ash Grey / Deep Grey Silver Grey Deep Black (Line-X)

upholstery colors



Khaki Green Carbon Black Sand Beige Ice Grey





ANKA300



ANKA300

standard features

Exterior Design

Electrostatic Powder Coating
Electrical Pop-up Roof System
Rear Entrance Door
Outside LED Lighting (Rear Door and Right Side)
Portable Entrance Ladder

Interior Design

Electrostatic Powder Coating (Cabinet and Interior Walls)
Carpet Covering Over PVC Coating Floor Ceiling
Ceramic Based Insulation Coating Storage Cabinets
Rear Door Flyscreen
Pop-up Roof with Flyscreen and Curtain

Living and Sleeping Area

Dining Table
Expandable Bed Area (3 People) (closed: 2mx1.5m) (open: 2mx2.2m)
Seat and Back Cushions
Seating Area for 2+1
Under Seat Storage Cabinets (2 pcs.)

Kitchen Area

Single Stove
Faucet
Single Bowl Chrome Sink
Kitchen Storages

Interior Bathroom Area

Portable Shower Curtain
Shower Head
Wet Floor Grating

Electric / Electronic / Control System

6-Button Analog Control Panel
Battery (90A)
Dimmer Adjustable LED Indoor Lighting with Remote Controller
Pako Switch
Victron Blue Smart Charger (10 Amper)
Defa 220v Charger Input, Cable and Bag
USB Charging Ports
12v Power Outlet
12v Refrigerator Power Outlet
LED Strip Lighting

Water System

Water Pump (19 L/Min)
Water Level Indicator
Chrome White Water Tank (80 L)
Chrome Grey Water Tank (17 L)
Chrome Water Filler Cap
Water Drain Valve

Gas System

Stove Gas Hose
Gas Regulator

optional features

Height Adjustable Steady Legs (4 Pieces)
Premium Exterior Shower Area
Portable WC
Ceiling Net
Victron Energy Battery 220 A Eberspacher D2 L
Heater (Diesel)
Solara Solar Panel 160w & Solara Regulator
Crawler Smart Panel
Boiler
Dometic 65 Refrigerator*
Indel B Cruse 65 Refrigerator*
Engel 57 Refrigerator*
Berhimi 50 Refrigerator*



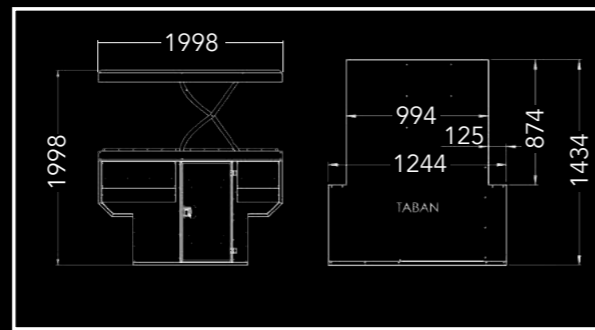
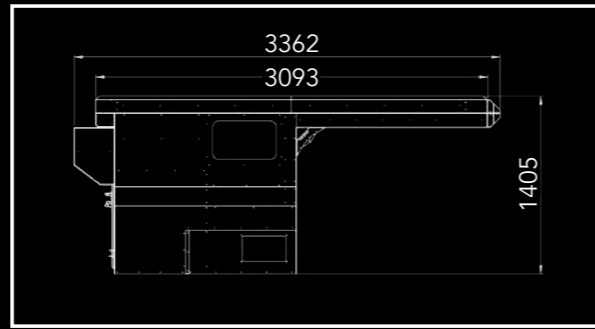
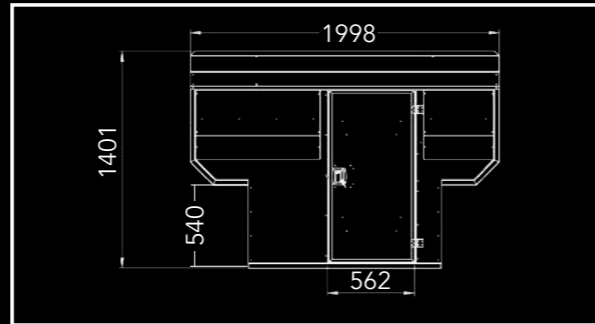
* Brands and models may differ depending on the supply status.
**Crawler reserves the right to make changes to product and option features as part of product development efforts.

photos



technical features

Body: Aluminium
Top Length: 3.000 mm
Interior Length 1: 874 mm
Interior Length 2: 1.438 mm
Weight: 425 kg
Top Width: 2.000 mm
Interior Width 1: 996 mm
Interior Width 2: 1.246 mm
Open Height: 2.300 mm
Closed Height: 1.400 mm

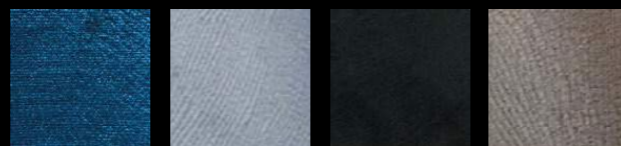


exterior colors



Silver Grey **Ash Grey / Deep Black** **Deep Black (Line-X)**

upholstery colors



Deep Blue **Ice Grey** **Carbon Black** **Sand Beige**





CMP190



CMP190

standard features

Exterior Design

- Rear Entrance Door
- Slide-Out Entrance Ladder
- Height Adjustable Steady Legs (2 Pieces)
- Side Opening Bed Compartment
- Side Opening Bed Compartment Window
- Pop-up Roof with Side Flyscreens and Curtains
- Chrome Storage and Locks
- Gas Bottle Racks (2Pcs)
- LED Tail Light
- Outdoor LED Lightening

Exterior Kitchen Area

- Sliding Outdoor Kitchen
- Double Stoves
- Faucet
- Double Plastic Sinks
- Stove Windshield
- Kitchen Storage Cabinet

Interior Design

- Electrostatic Powder Coating (Cabinet and Interior Walls)
- PVC Flooring
- Storage Lockers
- Indoor Curtain

Living and Sleeping Area

- Seating Area for 3 People
- Seat and Back Cushions
- Under Seat Storage Cabinets
- Primary Bed Area (195 x 190 cm)
- Secondary Bed Area (165 x 60 cm)

Electric / Control System

- 6-Buttons Analog Control Panel
- 40A Battery
- Dimmer Adjustable LED Indoor Lighting with Remote Controller
- Pako Switch
- Victron Blue Smart Charger (7A)
- Defa 220V Charger Input, Cable and Bag
- USB Charging Ports
- 12v Power Outlet
- Indoor LED Lightings
- Vehicle Electric Charging System (Cyrx)

Water System

- Water Pump (19 L/Min)
- Water Level Indicator
- Chrome White Water Tank (90 L)
- Chrome Water Fill Cap
- Water Drain Valve

Gas System

- Stove Gas Hose
- Gas Detect

optional features

- New Vehicle Application
- Spare Tyre Holder & External Shower Area
- Rear Light Protector (Black)
- 270 Degree Tent (Mouse Grey)
- Pop-up Ceiling Premium Difference (Mouse Grey) Curtain
- Fishing Holder
- Gun Holder
- Isolation
- Thetford Portable WC
- Portable Table
- Upper Bed Railing
- Victron Energy 220 Ah Battery (Price Difference)
- Eberspacher B3 Airtronic Air Heater (Gasoline)
- Imkar Air Conditioner (Cooler)
- Neta Portable Satellite
- Solara Solar Panel 160w & Solara Regulator
- Water Anti Freeze System
- Crawler Smart Panel
- Indel B 65 Refrigerator
- Engel 57 Refrigerator
- Berhimi 50 Refrigerator
- Dometic 65 Refrigerator
- Eberspacher D2 L Airtronic Air Heater (Diesel)

* Brands and models may differ depending on the supply status.
**Crawler reserves the right to make changes to product and option features as part of product development efforts.

photos



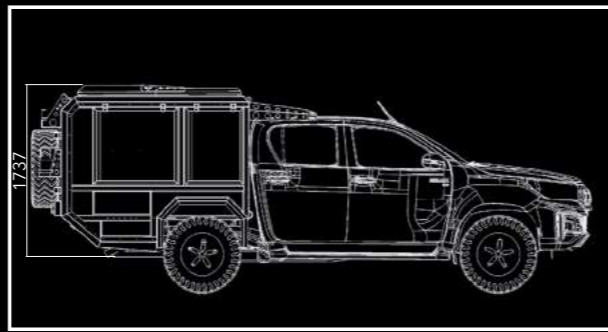
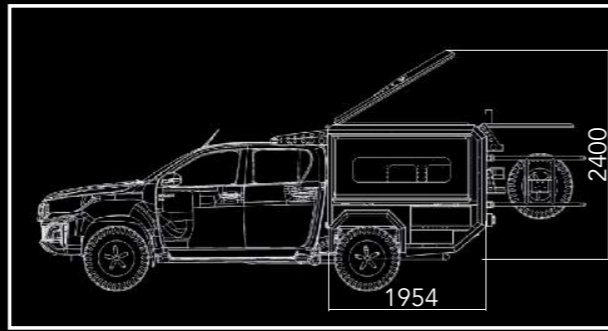
exterior colors



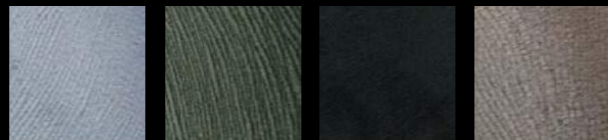
Dark Grey Ash Grey Deep Black (Line-X)

technical features

Body: Aluminium
Cabin Length: 1.900 mm
Cabin Width: 1.700 mm
Cabin Height: While Closed 1734 mm - While Open 2400 mm
Cabin Weight: 450 Kg (Cabin)
 Added Weight is 250 kg (as existing box/bed is removed)



upholstery colors



Ice Grey Khaki Green Carbon Black Sand Beige





BATU535



BATU535

standard features

Exterior Design

Windows with Flyscreen and Curtain
Externally Accessible Bathroom and WC door
Sliding Rear LED Lights
Track Lights
Side Horn Lights
Tag Lights
Outdoor LED Lighting
Outdoor Storage Cabinets
Outdoor Storage Cabinets Lighting
Side Opening Navigation Cover
Rear Opening Kitchen Service Cover
Height Adjustable Steady Legs (4 Pieces)

Interior Design

Electrostatic Powder Coating (Cabinet and Interior Walls)
Carpet Application on PVC Flooring
Ceramic Based Coating Insulation
Interior Storage Areas
Door Organizers
Safe
Cabinet Doors Fixing Pistons

Living and Sleeping Area

Sitting Area for 4 People
Seat and Back Cushions
Convertible Sofa to Bunk Bed (180 x 70 cm)
Movable Dining Table

Bedroom

Sliding Door with Flyscreen and Curtain Main
Bed Area (205 x 165 cm)
Wardrobe
Storage Drawers
Storage Cabinets

Kitchen Area

Chrome Kitchen Countertop
Kitchen Drawers
Under Counter Cabinets
Counter Top Cabinets
Triple Stove and Pot Holder
Chrome Kitchen Sink
Hot & Cold Adjustable Battery
Thetford Refrigerator 152 L (or equivalent)

Bathroom / Toilet

Aluminium Exterior Door
Aluminium Interior Door
Compact Laminate Flooring
Bathroom Steam Evacuation Fan
Thetford Cassette Toilet (or Equalivent) Folding Sink
Hot & Cold Adjustable Shower Head

Electric / Electronic / Control System

Crawler Smart Panel
Victron Energy 220A Gel Battery
Victron Blue Smart 20A Regulator
Defa 220v Charger Input, Cable and Bag
Lighting Dimmers
USB Charging Ports
12v Power Outlet
Bedside Charging Ports
Interior LED Lighting
13 PIN Socket

Heating / Cooling / Gas System

Truma Combi 6 Air and Water Heater System
Hot Air Outlet from 4 Points
Truma Duo Control Panel
Truma Gas Anti-Freeze System
Truma Double Gas Valves
Truma Collision Sensor
Gas Filter
Gas Detector
Copper Gas System 8mm
Roof Vent

Water System

Water Pump (19 L/Min)
Chrome Water Fill Cap
Chrome White Water Tank (136 L)
Chrome Grey Water Tank (45 L)
Black Water Tank (17 L)
Water Drain Valves

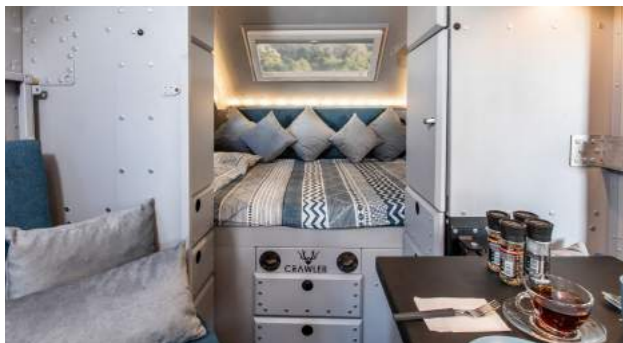
optional features

Schmid Solar Panel 325W & Charge Regulator *
Solara Solar Panel 160w & Solara Regulator *
Adjustable Dynamic Air Suspension (**C.D.S.**)
Awning Side Panels (Summer Type, Front, Left, Right)
Truma Mover XT4 (Mobility Without A Towing Vehicle) *
Bicycle Holder (15 kg x 1 Pieces)
Awning Side Panels (Winter Type, Front, Left, Right)
Crawler Chrome Barbeque
Thule 4 Meters Awning Tent (Mouse Grey) *
Gas Outlet For BBQ Grill
Fishing Holder
Gun Holder
Victron Energy 220 Ah Battery (Extra) *
Thule Electrical Step *
Truma Aventa Compact Plus Ceiling Type Air Conditioner *
Water Anti Freeze System
Come Up Winch or Equivalent (12000Lb) *

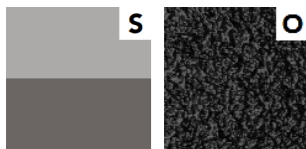
* Brands and models may differ depending on the supply status.

**Crawler reserves the right to make changes to product and option features as part of product development efforts.

photos



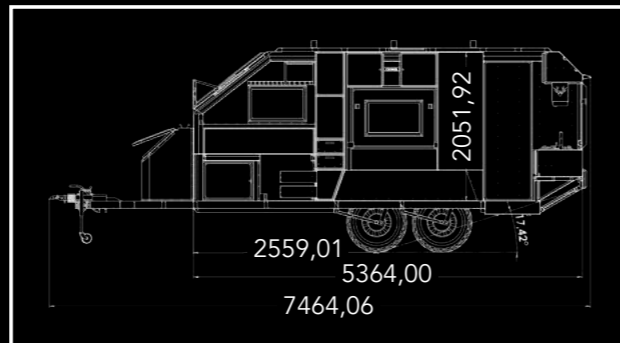
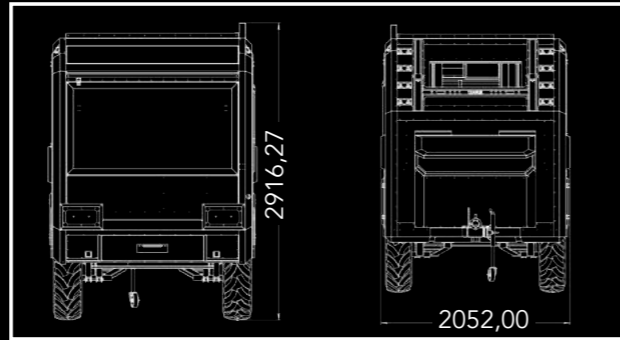
exterior color



Ash Grey / Silver Grey / (Line-X)
Deep Black / (Line-X)

technical features

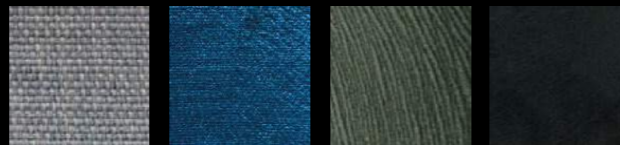
Body: Aluminium
Suspension: Independent Suspension with Double Shock Absorbers, Double Axles
Wheel/Tyre Size: 285.75.16 Rim: 6x139.7
Coupling: With brake / Rear Maneuverability
Chassis: Galvanize Coating
Length: 7.350 mm
Width: 2.050 mm
Height: 2.910 mm
Weight: Approx. 1.730kg with Standard Equipment



upholstery colors



Gravel Grey Mint Green Ocean Blue Forest Green



Fog Grey Dark Blue Khaki Green Carbon Black



Sand Beige Ice Grey



TRC458



TRC458

standard features

Exterior Design

Windows with Flyscreen and Curtain
 Exterior WC and Bathroom Entry Door
 Rear Opening Kitchen Service Cover
 Height Adjustable Steady Legs (4 Pieces)
 Pop-up Roof with Side Flyscreens and Curtains
 Fuel Cans Black (2 Pcs)
 LED Tail Light
 Side Track Lights
 Storage Cabinets
 Gas Bottle and Storage Cabinets
 Outdoor LED Lighting

Interior Design

Electrostatic Powder Coating Paint (Cabinet and Interior Walls)
 Carpet Decking on PVC Floor
 Ceramic Based Insulation Coated Ceiling
 Storage Lockers
 Side Door Storage Compartments
 Fixing Area with 4 Tie Down Straps
 Zipped Toilet/Bathroom Door
 Upper Bed Exit Ladder
 Fabric Pocket Set
 Side Door Flyscreen
 Shelf Front Zipper Application

Living and Sleeping Area

Seating Area for 6 People
 Seat and Back Cushions
 Folding Inner Table
 Convertible Seats to Sleeping Area (200 x 160 cm) Upper Bed Section (200 x 150 cm)

Kitchen Area

Kitchen Accessible from Inside and Outside
 Chrome Kitchen Countertop
 Fixed Chrome Kitchen Sink
 2 Stove and Pot Holder
 Chrome Kitchen Countertops
 Kitchen Wardrobes and Drawers

Bathroom / Toilet

Aluminium External Door
 Zipped Premium Interior Door
 Compact Laminate Flooring
 Thetford Cassette Toilet (or Equivalent)
 Folding Sink
 Shower Head

Electric / Electronic / Control System

6-Buttons Analog Control Panel
 90A Battery
 Dimmer Adjustable LED Indoor Lighting with Remote Controller
 Victron Blue Smart 10A Regulator
 USB Charging Ports
 12v Power Outlet
 Indoor LED Lighting
 13 PIN Socket

Gas System

Copper Gas Piping
 Truma Double Gas Valve (or equivalent)
 Gas Detector

Water System

Water Pump (19 L/Min)
 Water Level Indicator
 Chrome White Water Tank (114 L)
 Chrome Grey Water Tank (33 L)
 Black Water Tank (17 L)
 Chrome Water Fill Cap
 Water Drain Valves

optional features

Indel B 65 Refrigerator *
 Berhimi 50 Refrigerator *
 Dometic 65 Refrigerator *
 Engel 57 Refrigerator *
 Schmid Solar Panel 325W & Charge Regulator *
 Adjustable Dynamic Air Suspension (C.D.S.)
 Alko or Winterhoff Coupling Lock *
 Truma Mover XT2 (Mobility Without A Towing Vehicle) * Extra Gray Water Tank 17L (Crawler Smart Panel is Man-datory)
 Rear Light Protector (Black)
 Crawler 270 Degree Premium Tent (Mouse Grey)
 Chrome Spare Wheel & Spare Wheel Holder
 Chrome Spare Wheel & Spare Wheel Holder & External Premium Shower
 Gas Outlet For BBQ Grill
 External Chrome Fresh Water Tank (Price Difference) External Portable Kitchen (It is recommended to be used with Gas Outlet For BBQ Grill)
 Gun Holder
 Victron Energy 220 Ah Battery (Price Difference) *
 Eberspacher D4 Airtronic Air Heater (Diesel) *
 Thule Electrical Step *
 Truma Box Type Air Conditioner *
 Truma Combi 4 Air & Water Heater *
 Truma Boiler (Water Heater) *
 Projector Lightening (Exterior, Right & Left)
 Water Anti Freeze System
 Come Up Winch or Equivalent (12000Lb) *
 Crawler Smart Panel

* Brands and models may differ depending on the supply status.

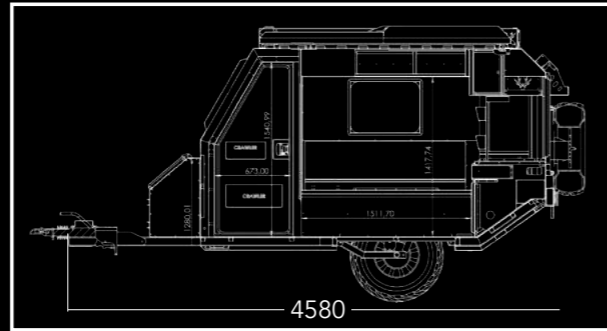
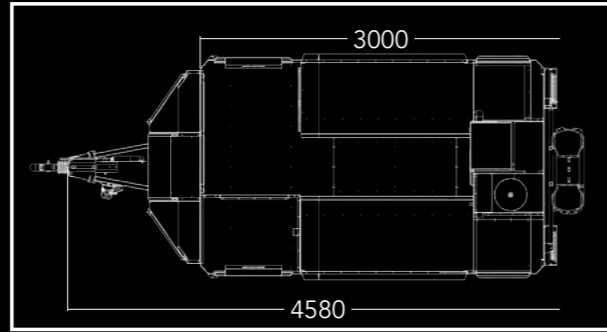
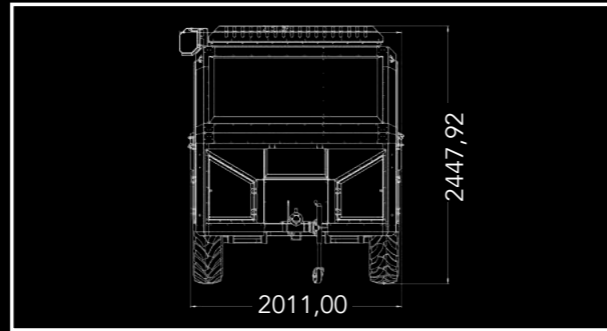
**Crawler reserves the right to make changes to product and option features as part of product development efforts.

photos

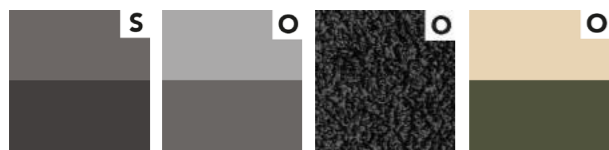


technical features

Body: Aluminium
Wheel/Tyre Size: 285.75.16 6x139.7
Coupling: With brake / Rear Maneuverability
Chassis: Cataphoresis Coating
Suspension: Swing Arm Independent, with 4 shock absorbers
Length: 4.580 mm
Width: 2.000 mm
Height: 2.450 mm
Weight: 865 kg (with standart features)

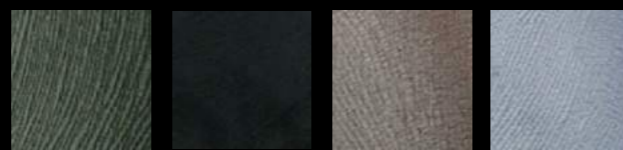


exterior colors



Ash Grey / Dark Grey **Ash Grey / Silver Grey** **Deep Black (Line-X)** **Sahara Beige / Military Green**

upholstery colors



Khaki Green **Carbon Black** **Sand Beige** **Ice Grey**



2023

YEAR OF

CRAWLER



CRAWLER

www.crawlercaravans.com